

In this month's Hydrafile:
Cartridge Catalogue 2007 Download

After more than a year in the making we finally have our new Cartridge Catalogue, version 2007 ready for downloading. To download it [click here](#).

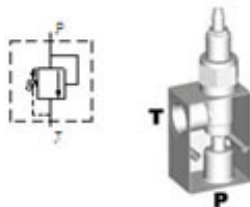
For over 30 years Hyspecs have offered comprehensive high quality hydraulic cartridge valves for the mobile and industrial equipment markets. We are designing and manufacturing cartridge manifolds using an extensive range of cartridges from HydraForce, Command Controls and Sun to meet virtually any need encountered in machine design for flow rates of 0.4 to 500 l/min.

Cartridge valving offers hydraulic system design engineers and customers an unlimited range of integral circuit design possibilities. With the extensive range of cartridges available, entire system valving can be housed in one manifold, saving on hoses & fittings, installation time and space. Having all of the valves in one block also eliminates possible leakage points and the chance of failure.

The latest Cartridge Catalogue is designed to make it easy to find the right valve for the job, we've used the latest CAD program technology to generate virtual manifolds with cut away views to show the internal workings of the valve.

PRESSURE CONTROLS

RELIEF VALVES
2-PORT RELIEF VALVES
[CLICK ON INDIVIDUAL CARTRIDGES FOR MORE INFO](#)

HS1620P12, P16


Cartridge	Q max l/min	P max bar	Notes	Ports BSPP	Assembly Price
RV3-16 **	300	345*	Differential Poppet	3/4" - 1"	\$ 525.00
RV16-26	300	240	Pilot-Operated	3/4" - 1"	\$ 425.00
RV5-16	300	345*	Pilot-Operated	3/4" - 1"	\$ 550.00
HS1620P12, P16 manifold only \$ 165.00					

- Manifold dimensions, 100 x 70 x 50mm (excluding cartridge)
- * Requires steel block over 240 bar – contact Hyspecs for pricing
- ** Swap P and T ports for RV3-16

To order this valve [click here](#)

3-PORT RELIEF VALVES
HS0820P4M, P6M


Cartridge Options	Q max l/min	P max bar	Notes	Ports BSPP	Assembly Price
RV08-20	22	228	Direct act. Poppet	1/4"-3/8"	\$ 202.00
RV58-20	22	345*	Differential Poppet	1/4"-3/8"	\$ 207.00
HS0820P4M, P6M manifold only \$ 99.00					

- Manifold dimensions, 55 x 50 x 50mm (excluding cartridge)
- * Requires steel block over 240 bar – contact Hyspecs for pricing

HYDRAULIC SPECIALTIES LTD.


P.O. Box 58-655 Greenmount, Auckland
 Tel: +64 9 274-9985
 Fax: +64 9 274-4441
 9 Lady Ruby Drive, East Tamaki
 Auckland, New Zealand

Web Site: www.hyspecs.co.nz
 E-mail: hyspecs@hyspecs.co.nz

P.O. Box 7493 Sydenham, Christchurch
 Tel: +64 3 366-1872
 Fax: +64 3 366-1431
 40 Durham Street, Sydenham
 Christchurch, New Zealand

We've added as much information as possible in the hope that it makes it easy for you to choose exactly what you're after:

- * Hydraulic circuit
- * Basic technical specifications like pressure, flow, port size etc
- * Detailed specification links for all cartridges - by clicking on the cartridge name (i.e. SV08-21) a new window opens up with full valve specification
- * Assembly price and separate price for the manifold
- * Manifold dimensions
- * Quick link email ordering
- * Available as a download (in Adobe PDF format), printed hardcopy and CD

To download the Hyspecs Cartridge Catalogue 2007 [click here](#) and follow the instructions. The file is in zip format as it consists of hundreds of product pdf files and the total size of the download is 36.6 MB. You will need a broadband connection, unless you are happy to wait for more than an hour using a dial up modem.

We will be getting hardcopies and a CD-ROM version printed shortly so if you don't want to miss out send us an email by [clicking here](#) or alternatively give us a call using the numbers listed in the left hand column. The downloadable version will be freely available from our website 24x7.

Kind regards

Nick Cottier
Marketing & IT Manager
nick@hyspecs.co.nz

HYDRAULIC SPECIALTIES LTD.



P.O. Box 58-655 Greenmount, Auckland
Tel: +64 9 274-9985
Fax: +64 9 274-4441
9 Lady Ruby Drive, East Tamaki
Auckland, New Zealand

P.O. Box 7493 Sydenham, Christchurch
Tel: +64 3 366-1872
Fax: +64 3 366-1431
40 Durham Street, Sydenham
Christchurch, New Zealand

Web Site: www.hyspecs.co.nz
E-mail: hyspecs@hyspecs.co.nz