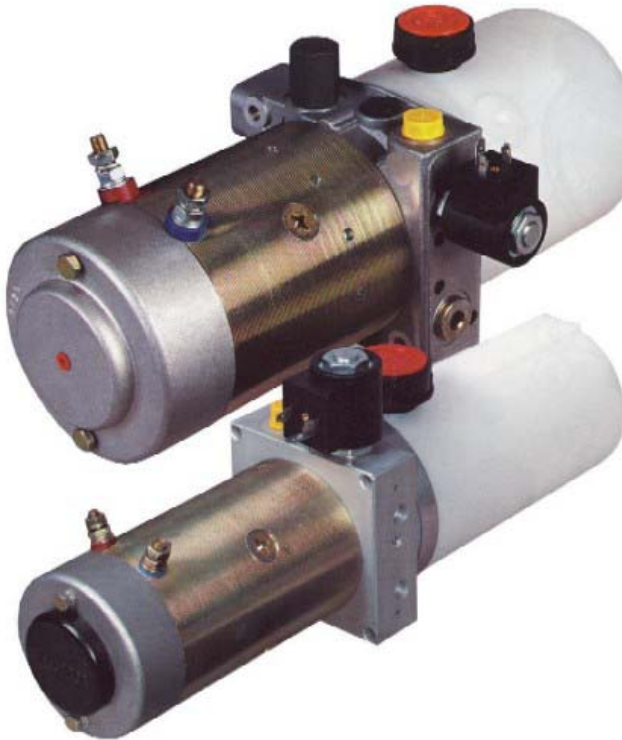




HE 2000 POWER PACKS



- Modular Configuration Design
- 12 or 24 VDC Medium and Heavy Duty Rated Electric Motor Options
- Single and Three Phase Motors Combination Options
- 2 Pump Designs with 17 Displacement Options - 0.8 cc/rev to 5.7 cc/rev
- Up to 230 Bar Operating Pressure
- Multiple Integral Valve Options:
 - Solenoid Release Valve
 - Solenoid Directional Valve
 - Cetop 3 Interface
 - Manual Directional Valve
 - Relief Valve – 3 Options
 - Flow Regulator Valve – 4 Options
 - Straight Power Pack – P & T Ports Only
- Multiple Reservoir Options:
 - Plastic or Steel Construction
 - 1.2 Litre to 15.2 Litre Capacities
- Remote Raise and Lower Cord Sets

Contact Hyspecs for configuration,
pricing, and availability options to suit
YOUR requirements



For more information, please fill in the form below and fax to Hyspecs on 09 2744441



Company:

Name:

Company Address:

Phone Number:

.....

Fax Number:

.....

E-Mail Address:

AUCKLAND - PH (09) 2749985

CHRISTCHURCH - PH (03) 3661872

Web-Site: www.hyspecs.co.nz

E-mail: hyspecs@hyspecs.co.nz