

••••• **INNOVATION AT WORK FOR YOU** •••••

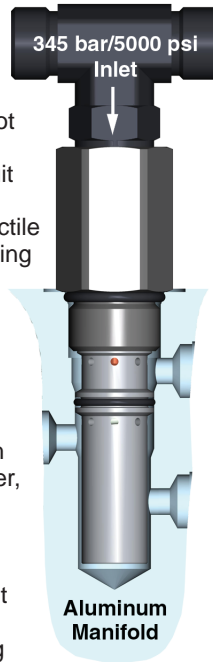
New PRES50-30 valve reduces cost of secondary manifolds in high pressure systems.

In many applications the primary machine function uses a high pressure (up to 345 bar/5000 psi) pump, while there are secondary or pilot circuits that are connected to the same pump but do not require, or cannot withstand, full system pressure. In order to reduce the main circuit pressure to a lower range for the auxiliary functions, there is often a large steel or ductile iron manifold which uses a pressure reducing valve to decrease the high inlet pressure.

Using the new PRES50-30, the secondary manifold for the lower pressure auxiliary functions can be aluminum, reducing both cost and weight. The main system pressure is plumbed directly into the steel adapter of the PRES50-30, which can withstand up to 5000 psi. In the adapter, pressure is reduced to between 450 and 800 psi for downstream functions.

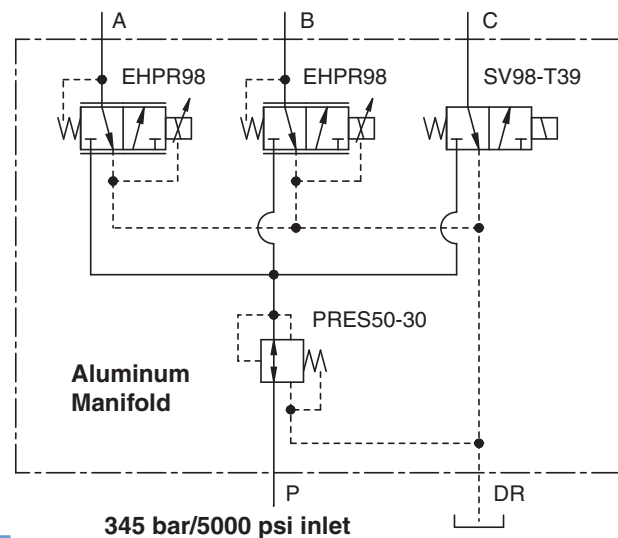
The PRES50-30 is rated for flows up to 11.3 lpm/3 gpm, making it suitable for most pilot and secondary applications. It is a direct-acting, spool-type pressure reducing valve which acts as a pressure regulating device for secondary circuits with stable input flow.

In its steady state the PRES50-30 allows flow to pass bi-directionally from port 3 to port 2, while the spring



chamber is constantly drained at port 1. Once the preset pressure is achieved at port 2, the cartridge will shift to block flow at port 3, thereby regulating pressure at port 2. Also, while in regulating mode, the valve will relieve pressure from port 2 to port 1 at a variable value over the set reducing pressure.

Contact a HydraForce representative for more information on applying this cost-efficient valve.



[go to PRES50-30 catalog page](#)

Features	Benefits
Rated to 345 bar/5000 psi at the inlet of port 3.	Allows plumbing of high pressure line into a lower cost, lighter weight aluminum manifold.
08 spring option available.	Reduced pressure range is well-suited for auxiliary and pilot applications.
Direct acting.	Faster response time.
Uses industry standard VC98-3 Cavity.	No additional tooling costs required. SAE 6 and 8 standard housings in stock.
All standard seal options available.	Specify seal material to suit your application.
i-Design V.3 features a robust Custom Component specification tool.	Specify and model an accumulator and other manifold components of choice with i-Design v.3 Manifold Design Software.
5-year limited warranty. See full warranty statement in the catalog or website.	Confidence, with the backing of the industry's leading manufacturer of hydraulic cartridge valves
Tested to 1 million cycles at full rated pressure.	Long life without wear or decreased performance over time.

HydraForce is dedicated to innovation, quality and superior technical support to provide our customers with the most competitive high-performance solutions in the industry. See www.hydraforce.com for more information, or contact your HydraForce representative.

Disclaimer: Nothing in this document constitutes an implied warranty of merchantability, or of fitness for a particular purpose. The information contained in this document is provided for technical illustration purposes only and may not be used as a statement of suitability for use in any particular application. Each application is unique and prospective purchasers should conduct their own tests and studies to determine the fitness of HydraForce's products for their particular purposes and specific applications.

HYDRAFORCE, INC.

500 Barclay Blvd. • Lincolnshire, IL 60069 USA
 Ph: 847 793 2300 • Fx: 847 793 0086
 Web: www.hydraforce.com • E-Mail: sales@hydraforce.com
 ISO 9001 & QS 9000 • Member: National Fluid Power Assn.

HYDRAFORCE HYDRAULICS, LTD.

St. Stephens Street • Birmingham B6 4RG England
 Ph: 0121 333 1800 • Fx: 0121 333 1810
 Web: www.hydraforce.com • E-Mail: sales@hydraforce.com
 ISO 9001 & ISO 14001 • Member: British Fluid Power Assn.